

Peckham
Platform

Impact
REPORT
2023-24

CONTENTS

03 OUR 2023–24 IMPACT IN SUMMARY	08 EARLY YEARS ENGAGEMENT	14 OUR PUBLIC VALUE IN NUMBERS
04 CO-COMMISSIONED CREATIVE PROGRAMME	09 / 10 / 11 YOUTH PLATFORM: BUILDING FUTURES	15 OUR NEW HOME
05 2023–24 HIGHLIGHTS	12 SCHOOLS PROGRAMME	12 THANK YOU
06 / 07 KEY PROJECTS	13 ACCESS AND INCLUSION	13 CONTACT US

OUR 2023–24 IMPACT IN SUMMARY

Peckham Platform continued to build connections with local communities and young people across Peckham and Southwark, using arts and co-created projects to respond to the diverse needs and aspirations of our area. In 2023–24, we extended our reach both online and out into public spaces, providing hundreds of thousands of opportunities for local residents to experience, participate in, and reconnect through creative activities.

OUR NEW HOME

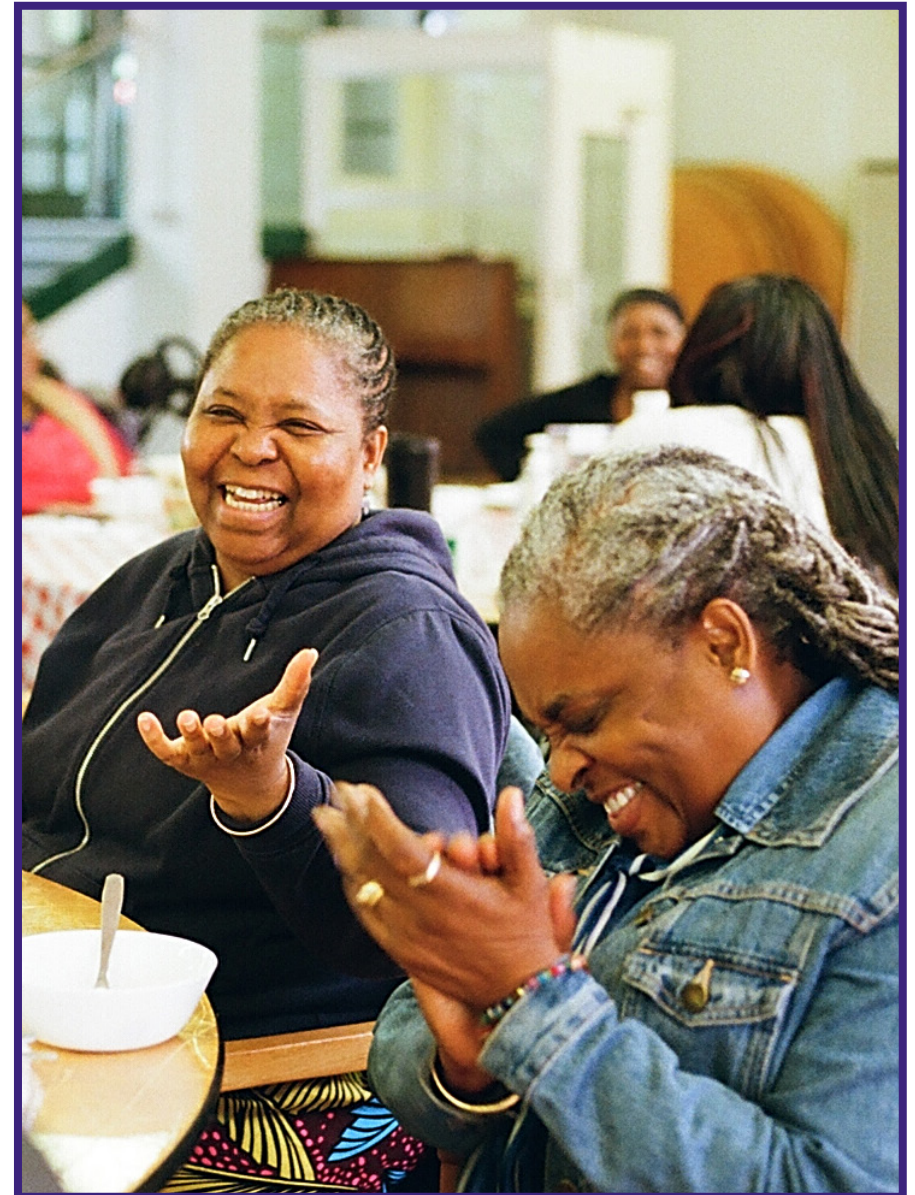
As we prepare for the opening of our new home on Peckham Square, a purpose-built space for creativity and collaboration, we remain committed to nurturing spaces that are trusted, welcoming, and inclusive.



CO-COMMISSIONED CREATIVE PROGRAMME

Through our co-commissioning model, we continue to foster a collaborative and community-driven approach to the arts. By working alongside local communities to shape each project, from defining themes to selecting artists and shaping outcomes, we ensure that the work created resonates with the lived experiences of local people. This year, our programmes reached over 90,000 people, with six new commissions, including two permanent public art installations and a live performance.

Our continued collaboration with key partners, including Golden Oldies, Appleby Blue Almshouse, South London Refugee Association (SLRA), Southwark Youth Justice Service (SYJS) and INSPIRE has built on previous learnings, particularly from the 2019–22 project *Tilting the Mirror*, amplifying the voices of those traditionally excluded from the cultural conversation.



2023–24 HIGHLIGHTS:



Audience Reach:

90,000

individuals through public works and performances.



New Commissions:

Six New Works

including permanent public realm art and a performance piece.



Community Involvement:

A strong focus

on local communities, especially those impacted by socio-economic disadvantage and/or underrepresentation in arts and culture.

KEY PROJECTS

Body Arcana (Homebuilding) by
Lesley Asare and Drew Sinclair:

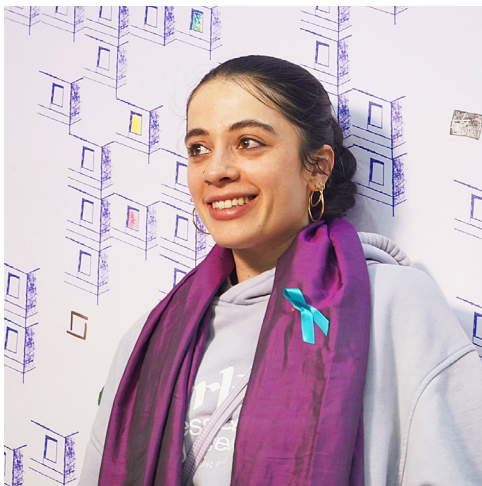
A co-created performance about home and belonging, featuring young people from the South London Refugee Association, as part of the 2023 London Gallery Weekend



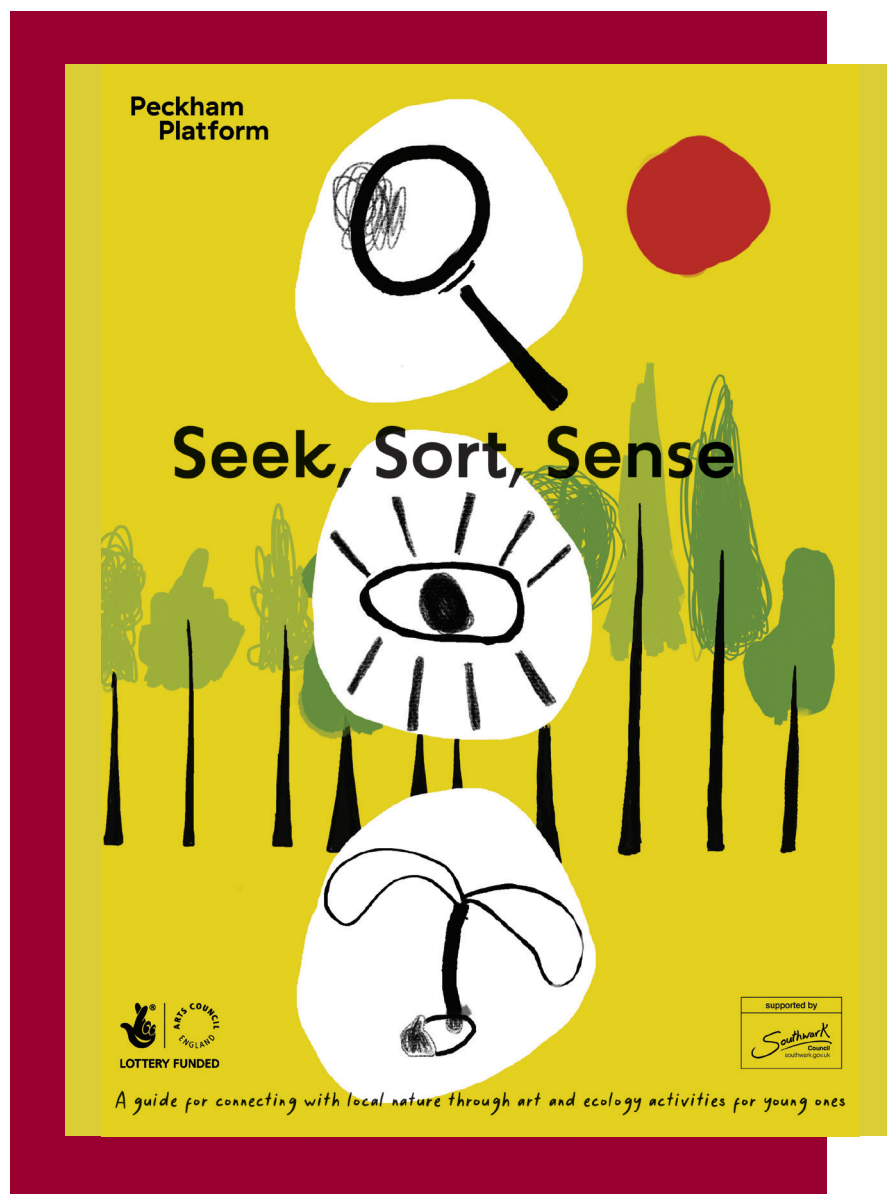
Image Credit: Ruth Sewell

KEY PROJECTS

Sunshines in the Ends by **Meera Shakti Osborne** and Supported Love Reaches All by **Tyreis Holder**



Site-responsive public artworks,
experienced by over
12,000 visitors,
that explored themes of
love, community, and identity.



EARLY YEARS ENGAGEMENT

In partnership with Southwark's Culture, Health and Wellbeing Partnership, we supported early years engagement through **Seek Sort Sense**, a series of activity packs for children aged 3–6 and their families. These resources encouraged families to explore green spaces, promoting creative learning and nature based activities.



YOUTH PLATFORM: BUILDING FUTURES

Our Youth Platform grew in strength this year, empowering young people aged 16–22 to explore and co-create new public realm artworks.

Through the Rye Lane Reconnected programme, we supported young people from marginalised backgrounds, including those with experiences of the migration and justice systems, to take a leading role in shaping their local environment.



Session Delivered:

20 artist-led workshops.



Participants:

50 young people, particularly those underrepresented in the arts.



Youth-Led Outcomes:

Youth-led events and discussions addressing key issues such as regeneration and gentrification.



“

Our young people now have a different mindset and approach to art. It feels more accessible to them and has given them another tool to use in their everyday lives. It has also given them a sense of pride and achievement, seeing their hard work displayed in a public space and the accomplishment of seeing a task through to the end. One of the biggest impacts, however, is the conversations that were born out of the project, which explored their position in their community, their identity as young people and as Southwark residents, their culture and race and their connections/relationships to all of these.

Youth Reparations Officer, on foreseeing any long-term impact or ongoing benefits from their young people's participation in Peckham Platform's project

What specific impact or benefits has your organisation experienced as a result of participating in this [Rye Land Reconnected] project?

“

We have been able to expose our young people to another world (the art world); a world not easily accessible, nor of much interest to them, prior to participating in this project. This has opened up important conversations about their identity, community and opportunities and demonstrated how their ‘voices’ can be heard through such platforms.

For many participating on the project, it was their first time delving into art as a medium of self expression and discovery and the first time they had realised it was something they were actually quite good at; which is such an important achievement for those young people who are rarely given such opportunities to achieve.

SYJS Reparations officer, Leila Boghdadi’s

SCHOOLS PROGRAMME

Our Arts Awards initiative remained central to our work in schools, helping students explore and develop their artistic skills while fostering a deeper connection to the arts and creative careers. In 2023–24, 29 students across two schools received Explore and Bronze awards, with **100% of teachers affirming the positive impact on student well-being** and progress.



Sessions
Delivered

23

Students
Reached

29

83% of students expressed an interest in continuing arts based learning, with 100% of teachers highlighting the programme's benefits for well-being and mental health.

ACCESS AND INCLUSION

Our commitment to access and inclusion continued in 2023–24, ensuring that every opportunity was tailored to communities facing barriers to participation. This year, we maintained a strong focus on removing obstacles for individuals from socio-economically disadvantaged or marginalised backgrounds.

Access Budgets:

Support for individual needs, including childcare and carers' costs.

Art Materials:

Free distribution of art resources to homes and daycare centres to support remote learning.

Community Partnerships:

Working with local organisations like the South London Refugee Association and Southwark Youth Justice Service to reach priority groups.

OUR PUBLIC VALUE IN NUMBERS

We are proud to have been part of such a transformative year for Peckham Platform, amplifying the voices and creativity of our local communities and ensuring that the arts continue to be accessible to all.



12,000

individuals connected
through creative
programming



6

new commissions, including
public art viewed by over
90,000 visitors



20

youth workshops
fostering collaboration
and leadership



100%

of teachers agree that the
Arts Awards programme
positively impacted students



Building our Future – Our New Home on Peckham Square

We are progressing steadily with our capital project on Peckham Square, where our new purpose-built space will soon serve as a hub for creativity and community. This exciting development is supported by Southwark Council, who are committed to ensuring the venue reflects the needs and aspirations of the local community.

Design by Knox Bhavan

We are working with the award-winning architects Knox Bhavan, known for their expertise in creating cultural and community-focused spaces. Their design prioritises accessibility, flexibility, and sustainability, with adaptable spaces for events, workshops, and gatherings. The building will also feature green spaces, fostering a strong connection to nature. This new home will be a welcoming space for local residents, artists, and young people to engage with the arts and shape the cultural future of Peckham.

Thank You to Our Supporters

We are deeply grateful to our partners and supporters, including Arts Council England, Southwark Council, Art Fund, and United St Saviour's Charity, whose continued support has made our work possible.



Image Credit: Tolúwalopé Elusadé



Peckham Platform

www.peckhamplatform.com